



Security Options with GSW UTS

RUN A TIGHT SHIP?



SSH2 (FIPS 140-2 option available)

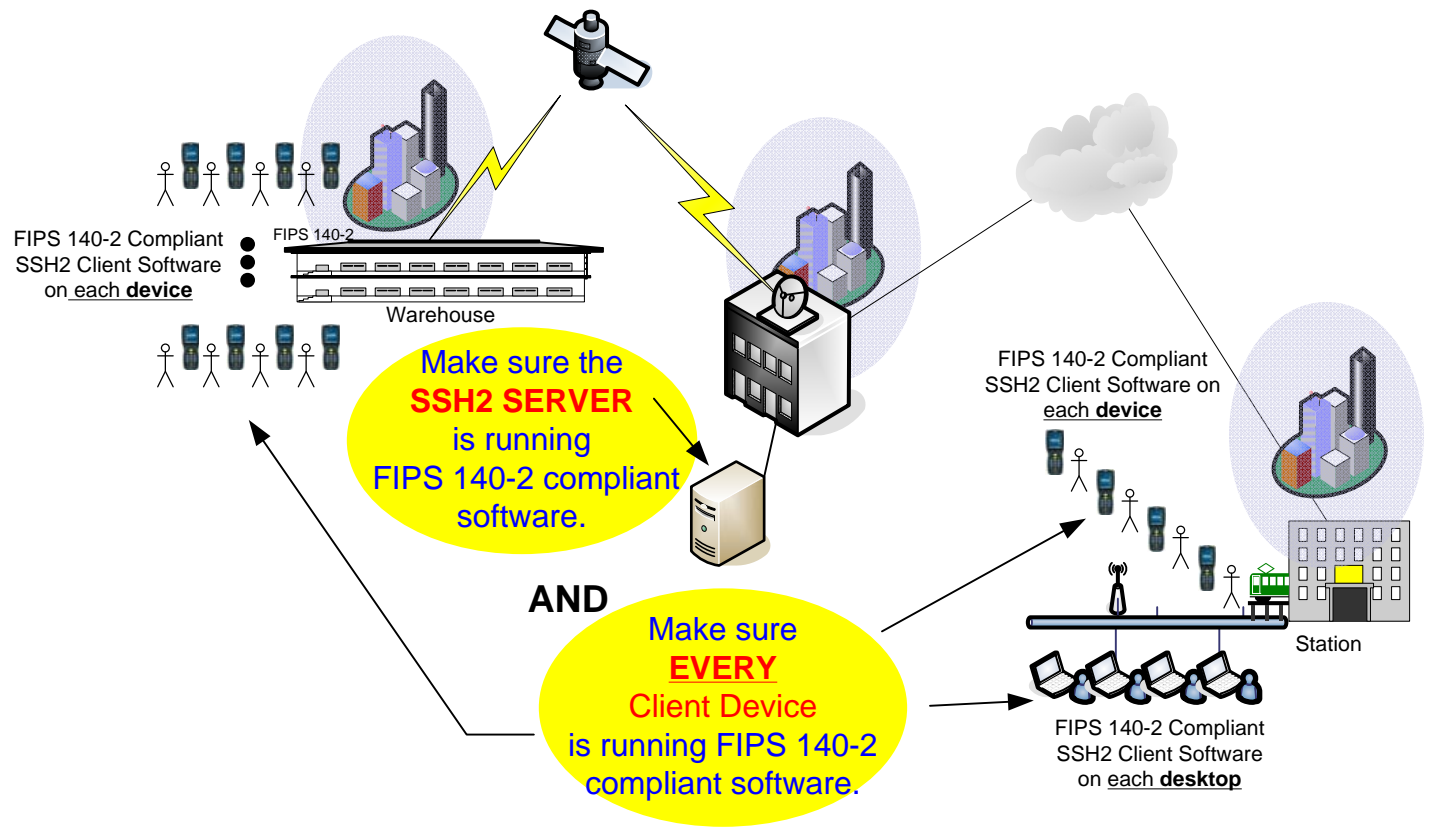
VERY strong Login and Data Stream Encryption
(AES-256, 3DES, Blowfish and others)
Secure Remote Login, Secure Data Exchange, Secure Access to Application

Then you need to
look at GSW SSH2
w/FIPS 140-2 Option!

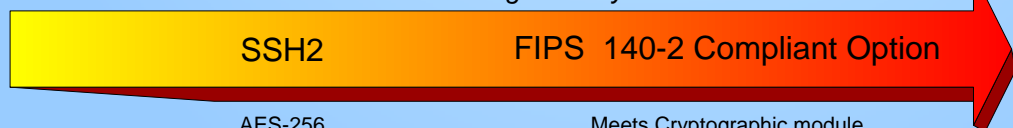


★★★★★ GSW undertook a purposed and specific development effort in order to provide required FIPS 140-2 compliant SSH2 Server and Client software to the United States Military. Having completed this task, GSW is able to make this software commercially available to other Federal and State agencies as well as educational & research institutions, commercial business and other entities who need to comply with this security requirement for cryptographic modules standard. ★★★★★

FIPS 140-2 - It has to be END to END or its not SECURE!



Increasing Security



SSH2

FIPS 140-2 Compliant Option

AES-256
3DES, BLOWFISH
and other ciphers

Meets Cryptographic module
security standards to protect
sensitive and valuable data.

FIPS standards are either
mandated or recommended for
use in federal government
information (IT) systems.

Fully Functional Trial Downloads Available
sales@georgiasoftware.com

www.georgiasoftware.com
Telephone: 706.265.1018