

Georgia SoftWorks Announces SSH Server for Windows Feature Release

Georgia SoftWorks (GSW) releases the latest version of their [SSH Server for Windows](#). Version 8.05.0029 is now available for shipping and distribution.

Dawsonville, Georgia (PRWEB) July 17, 2014

[Tweet](#) [Like](#) [+1](#) [Share](#) [EMAIL](#)

Georgia SoftWorks announces the release of their [SSH Server for Windows](#) Version 8.05.0029. The GSW SSH Server for Windows provides secure remote access to a Windows host including Secure Remote Logon, Secure Data Exchange and Secure Access to applications on an insecure network.

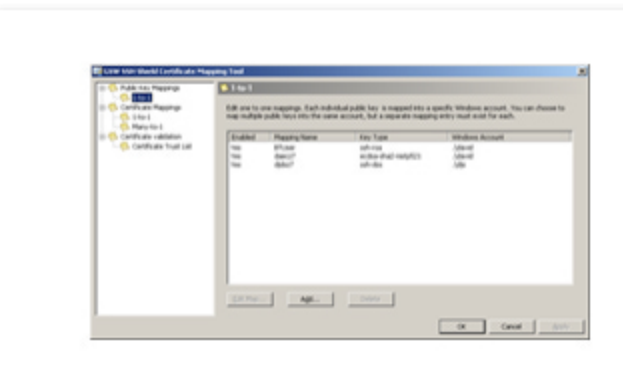
The new version of the GSW SSH Server includes several new features and security measures. The Georgia SoftWorks SSH Shield now includes Elliptic Curve Cryptography support for server-to-client authentication, key exchange, and public key authentication. This includes new host key algorithms, new key exchange algorithms, and new public key authentication algorithms. The GSW SSH Shield supports new HMAC algorithms. A file in the GSW SSH Shield installation folder now holds key fingerprints for all host keys offered for server-to-client authentication. The Georgia SoftWorks Certificate Mapping Tool has been modified to allow for public key to user account mapping. New SSH Transport Layer Encryption modes are also supported with the feature release.

"Security is taken very seriously here at Georgia SoftWorks," said Doug Hitchcock of Georgia SoftWorks. "The consequences of a security breach can be damaging to individuals, businesses and even national interest. We make sure to stay on the cutting edge with our SSH Server for Windows, making sure that we always offer an easy-to-implement solution that offers true **End to End** security. We provide the strongest authentication features offered by an SSH Server for Windows."

Georgia SoftWorks is a software development company that has received global recognition for its development of the [GSW Telnet Server for Windows](#) and [SSH Server for Windows](#). GSW software is used in thousands of data collection environments around the world. They have end users and resellers on every continent except Antarctica. Their software is sold in demanding industrial applications including automobile manufactures, oil companies, airlines, grocery stores, the US Army, department stores, universities and more.

About Georgia SoftWorks:

Established in 1991, Georgia SoftWorks is a privately held software development company recognized for creating high performance data communications, system and telecommunications applications. Georgia SoftWorks has obtained a worldwide presence with its industrial SSH2/Telnet Server for Microsoft Windows. GSW's long-term commitment to SSH2/Telnet has led to the pioneering of major features such as Session Shadowing, Session Monitoring, Graceful Termination, Automatic Logon, Logon Scripting and more recently Team Services technology which allows mobile device users to transfer, swap, share and recover mobile device sessions. GSW has also provided the very first SSH Server to provide Digital Certificate Authentication with an Internet Information Server (IIS) like certificate-to-user account mapping. This includes 'One-to-one' and 'Many-to-one' mapping methods and also supports certificate trust lists (CTL).



GSW Certificate Mapping Tool

“ We make sure to stay on the cutting edge with our SSH Server for Windows, making sure that we always offer an easy-to-implement solution that offers true **End to End Security**. ”

[Tweet](#) [Like](#) [+1](#) [Share](#) [EMAIL](#)

[PDF](#) [Print](#)